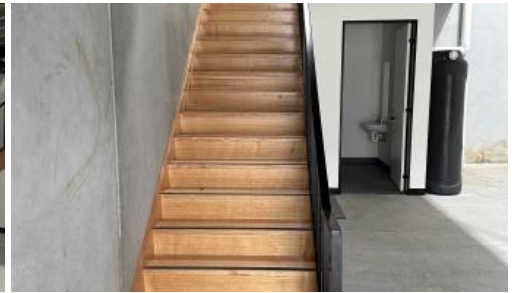




19, 1-12 Buys Court, Derrimut



Now Leasing

Brand New, fully functional, and on site parking are just some of the features this latest and greatest business park Derrimut has to offer, all a stones throw away from the freeway.

Warehouse: 150sqm

Mezzanine: 10sqm

Total: 160 sqm (approx.)

Allocated Car Parking Spaces on title

Sleek Contemporary Design & Interiors

High Clearance Warehouses & Functional Areas

Security Gated | 24 Hour Access

Kitchenette

Bathroom benefiting from shower

Zoning: Industrial

For more information and to arrange a private viewing please contact Ali Khatib 0400 668 431.

Price	\$2500 per month
Property Type	Commercial
Property ID	219
Office Area	10 m2
Warehouse Area	150 m2

Agent Details

Ali Khatib - 03 8418 2666

Office Details

Onpoint Commercial Real Estate
03 8418 2666

The above information provided has been furnished to us by the vendor/s. We have not verified whether or not that information is accurate and do not have any belief in one way or the other in its accuracy. We do not accept any responsibility to any person for its accuracy and do no more than pass it on. All interested parties

should make and rely upon their own inquiries in order to determine whether or not this information is in fact accurate.